

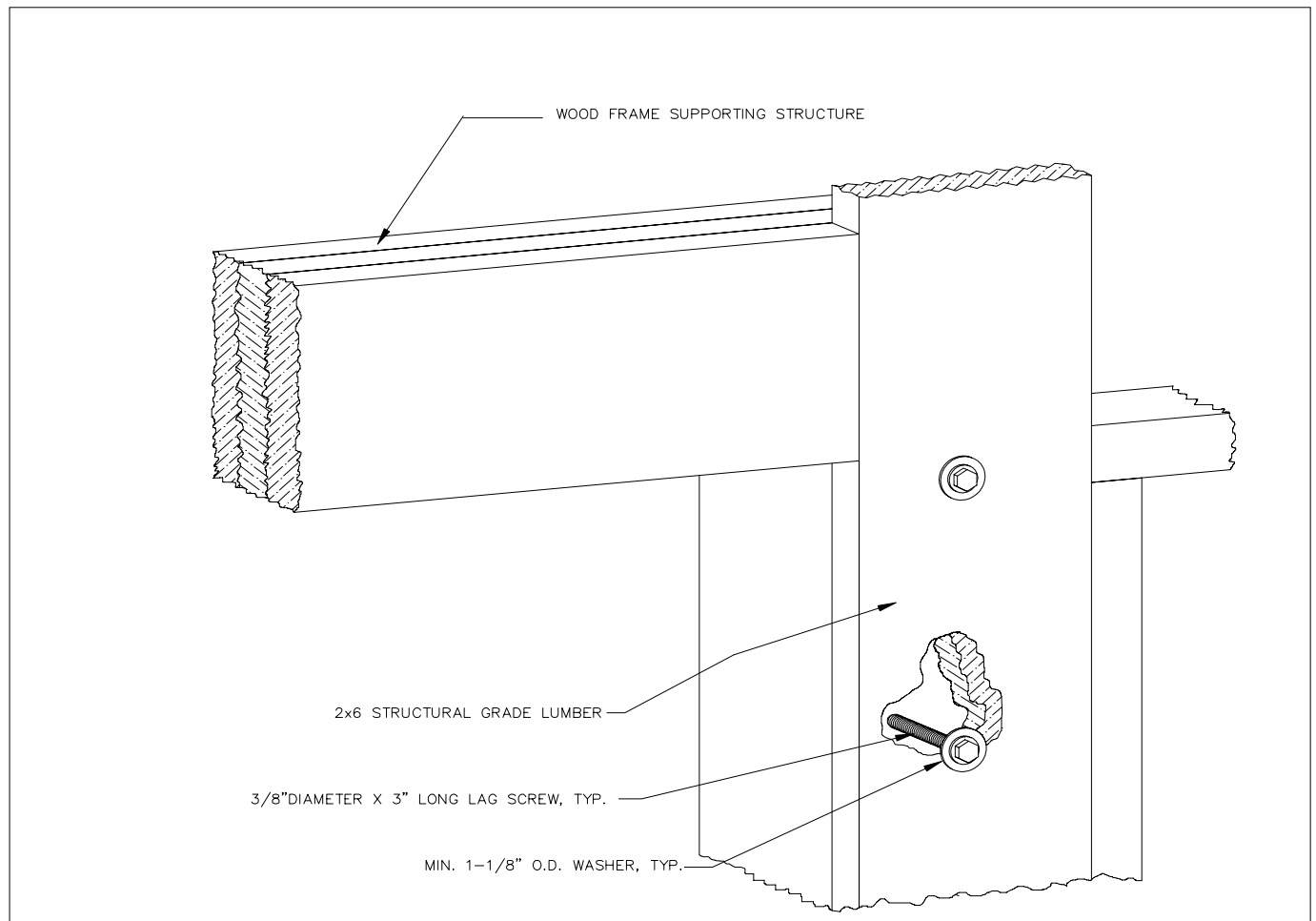
TDS-161e**3/8" X 3" LAG SCREW W/ 1-1/8" DIA. WASHER (1-1/2" EMBED)**

FIGURE 161e

Notes:

- Alternate design may be approved by a registered professional engineer.
- 2x6 wood jambs may be counterbored up to 1/2" deep at each lag screw location to provide a flush mounting surface.
- Lag screws shall have a minimum edge distance of 1-1/2" for maximum holding power.
- Spring Pad Connection Not Included

Note: Technical Data Sheets are information tools only and should not be used as substitutes for instructions from individual manufacturers. Always consult with individual manufacturers for specific recommendations for their products and check the applicable local regulations.

This Technical Data Sheet was prepared by the members of DASMA's Commercial & Residential Garage Door Division Technical Committee. DASMA is a trade association comprising manufacturers of rolling doors, fire doors, grilles, counter shutters, sheet doors, and related products; upward-acting residential and commercial garage doors; operating devices for garage doors and gates, sensing devices, and electronic remote controls for garage doors and gate operators; as well as companies that manufacture or supply either raw materials or significant components used in the manufacture and installation of the Active Members' products.